



Saskatchewan  
Watershed  
Authority

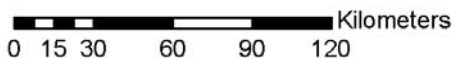
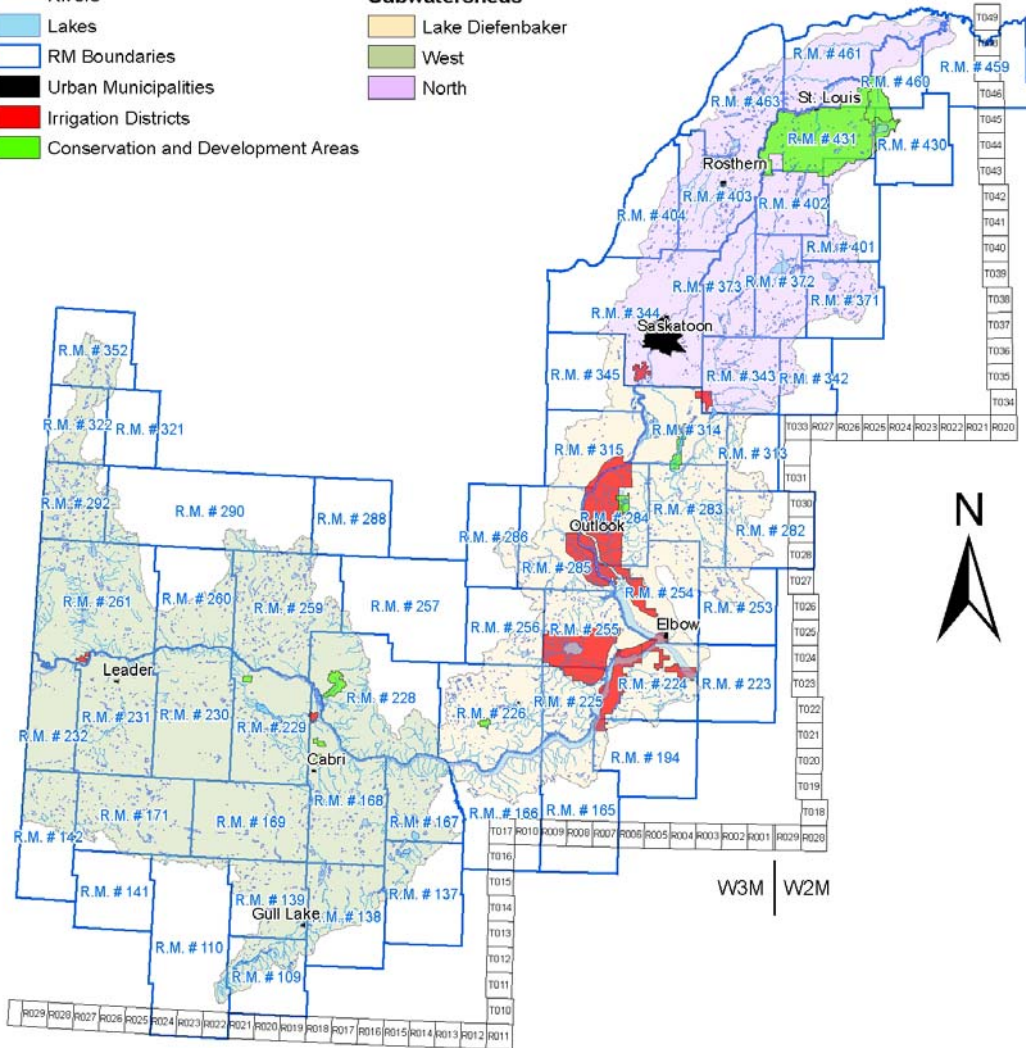
# South Saskatchewan River Watershed Administration Boundaries

## Legend

- Rivers
- Lakes
- RM Boundaries
- Urban Municipalities
- Irrigation Districts
- Conservation and Development Areas

## Subwatersheds

- Lake Diefenbaker
- West
- North



H:\GIS\SWA\_Planning\Map\_files\other\South\_Sask\Revised\_bndys\South\_Sask\_Admin\_Small.MXD

Produced by Saskatchewan Watershed Authority utilizing licensed topographic data from Information Services Corporation of Saskatchewan, Her Majesty the Queen in Right of Canada.  
Disclaimer: SWA prepares maps with varying degrees of accuracy and completeness dependent on the circumstances and available data. SWA makes no representation that this map will be sufficient for all uses. The user is advised to confirm the information contained herein in the event that precision and currency of data are required.

July 2008