

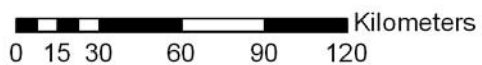
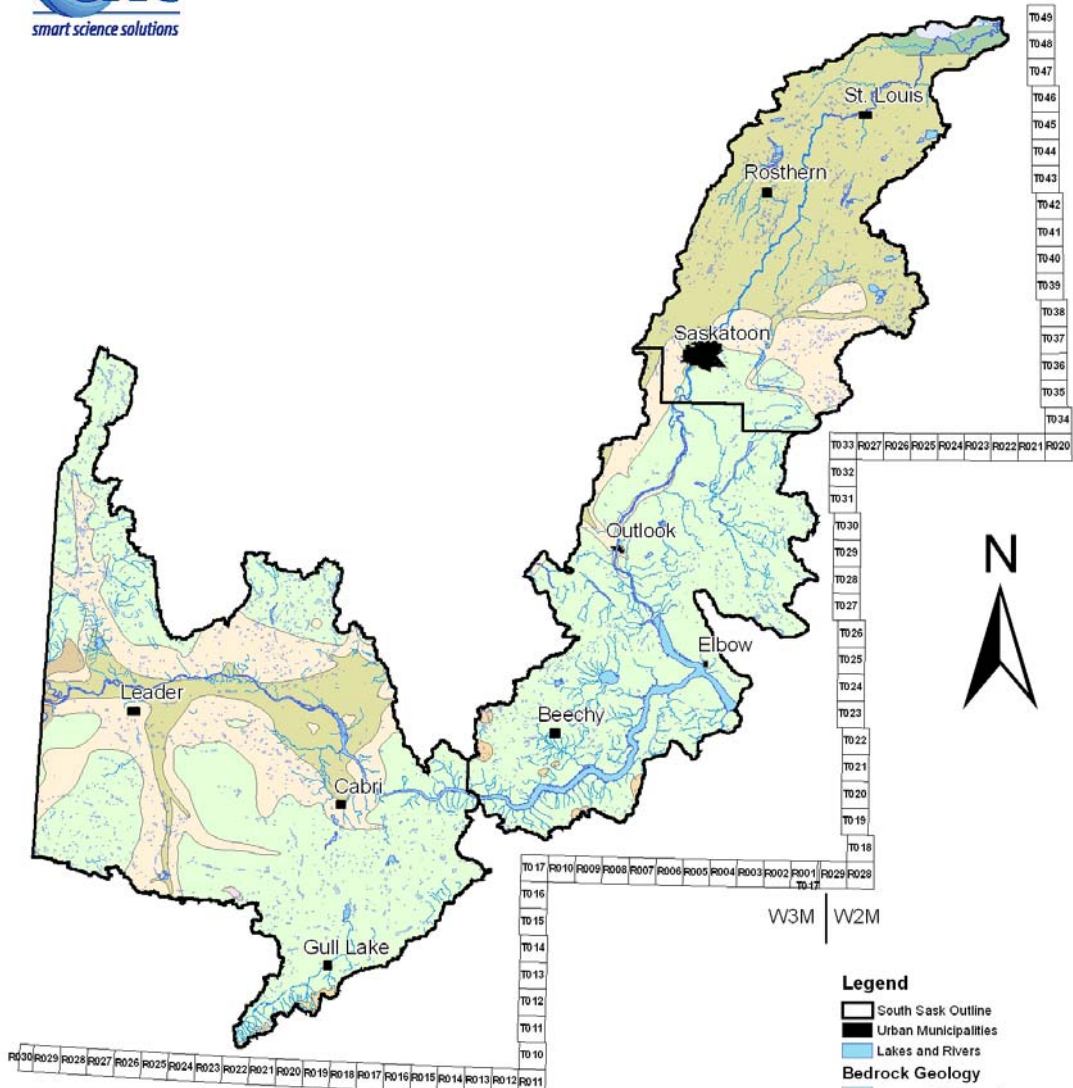


Saskatchewan
Watershed
Authority

Bedrock Surface Geology



H:\GIS\SWA - Planning\Map_files\South_Saskatchewan_R\Revised_IndVSSR_Sub_Studical_Bedrock_Geo_Small.MXD



- Legend**
- South Sask Outline
 - Urban Municipalities
 - Lakes and Rivers
 - Bedrock Geology**
 - Cypress Hills Formation
 - Ravenscrag Formation
 - Frenchman-Eastend Formation
 - Tertiary Undifferentiated
 - Bearpaw Formation
 - Judith River Formation
 - Lea Park Formation
 - Upper Colorado Group
 - Lower Colorado Group

All Data © 2008, Government of Saskatchewan
 Aquifer data provided by Saskatchewan Research Council and Saskatchewan Watershed Authority.
 Disclaimer: SWA prepares maps with varying degrees of accuracy and completeness dependant on the circumstances and available data.
 SWA makes no representation that this map will be sufficient for all uses. The user is advised to confirm the information contained herein in the event that precision and currency of data are required.

July 2008