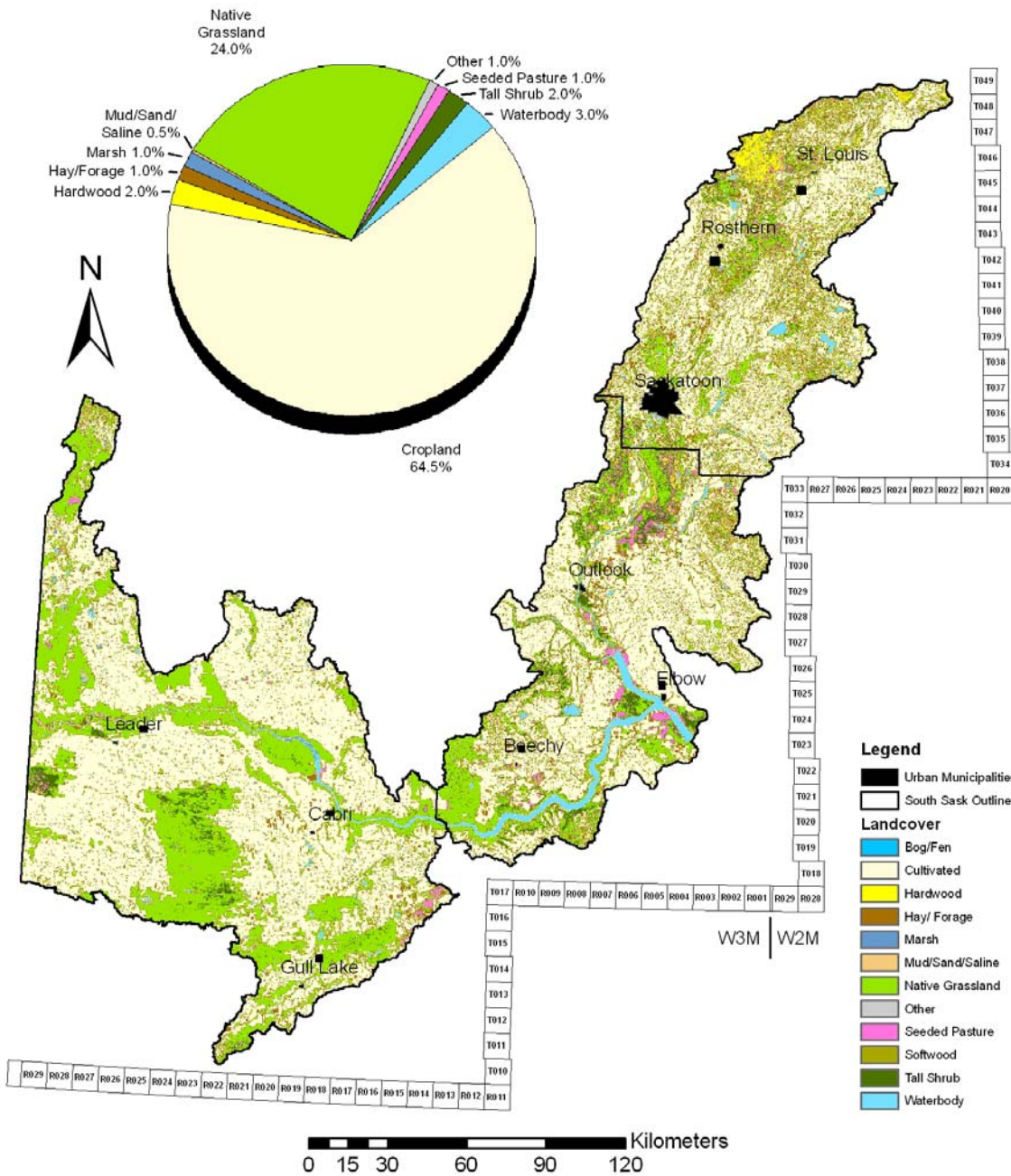




**Saskatchewan Watershed Authority**

# South Saskatchewan River Watershed Landcover



- Legend**
- Urban Municipalities
  - South Sask Outline
  - Landcover**
  - Bog/Fen
  - Cultivated
  - Hardwood
  - Hay/ Forage
  - Marsh
  - Mud/Sand/Saline
  - Native Grassland
  - Other
  - Seeded Pasture
  - Softwood
  - Tall Shrub
  - Waterbody

All Data © 2008, Government of Saskatchewan  
 Landcover data provided by Government of Saskatchewan from 1994 Landsat Imagery.  
 Disclaimer: SWA prepares maps with varying degrees of accuracy and completeness dependant on the circumstances and available data. SWA makes no representation that this map will be sufficient for all uses. The user is advised to confirm the information contained herein in the event that precision and currency of data are required.

July 2008

H:\GIS\SWA\_Planning\Map\_files\South Saskatchewan RR revised\_Enby\South\_Sask\_Landcover.MXD